

Editing and Updating Telecommunications Services

At a glance

Here, you'll learn how to edit and update the Telecommunications Service map in LogIE, including:

- Adding a new box to the map with details like services provided
- Changing the location of an existing box or updating the services it shows
- Removing a box from the map

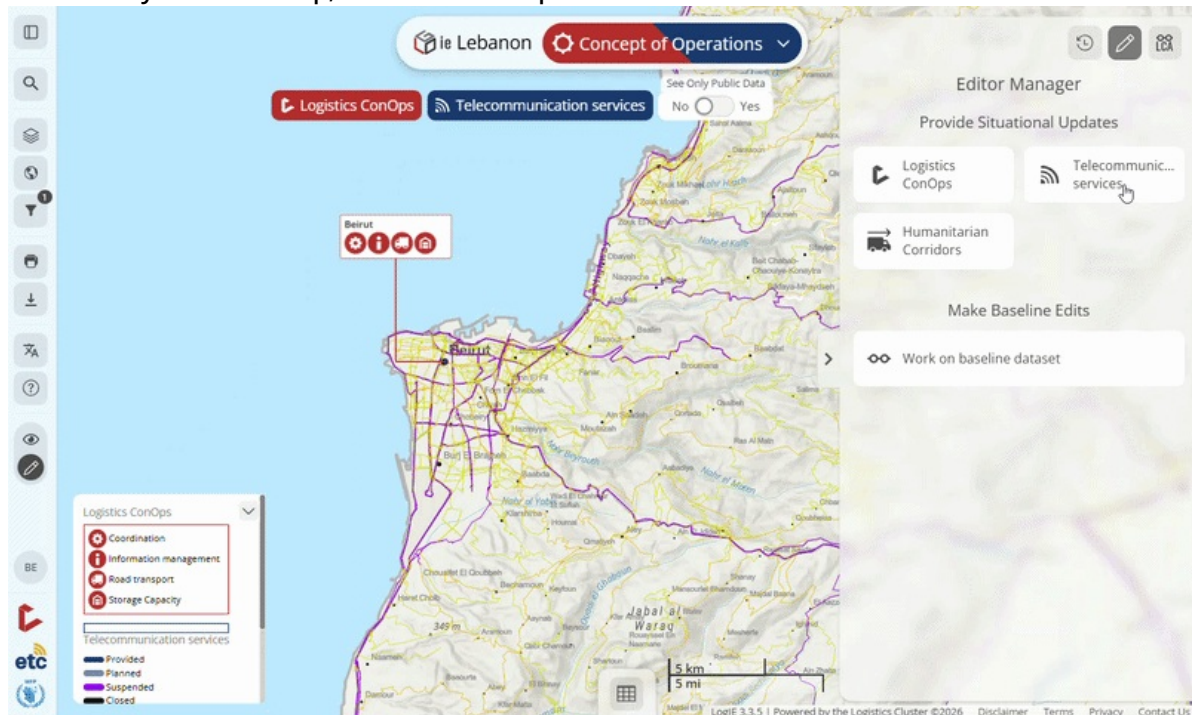
Step-by-step example

“ Scenario: You need to update the Telecommunication services in LogIE by adding new services and removing others.

1) To begin, switch to the **Concept of Operation module**. This module is not available on all emergency pages. When available, it should look similar to the image below.



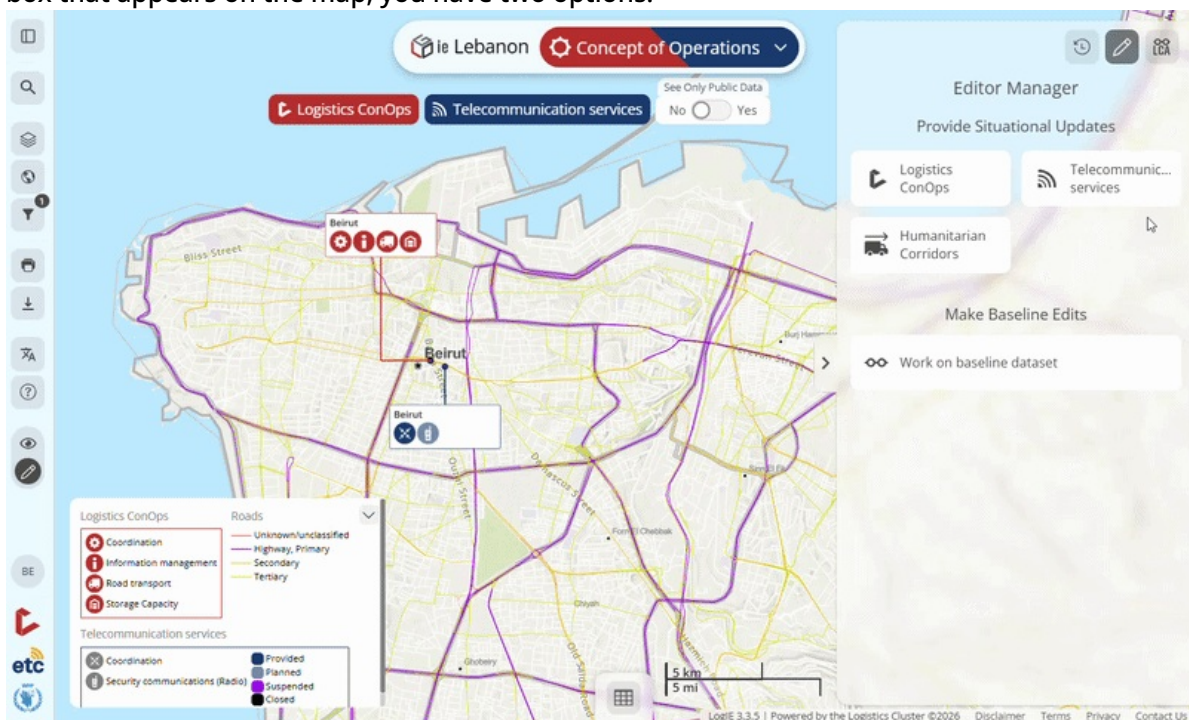
2) Adding a **new box on the map** for a specific location. If you need to add services to a place that is not yet on the map, follow these steps:



- Click on "Telecommunications services" under "Provide situational updates" in the Editor Manager.

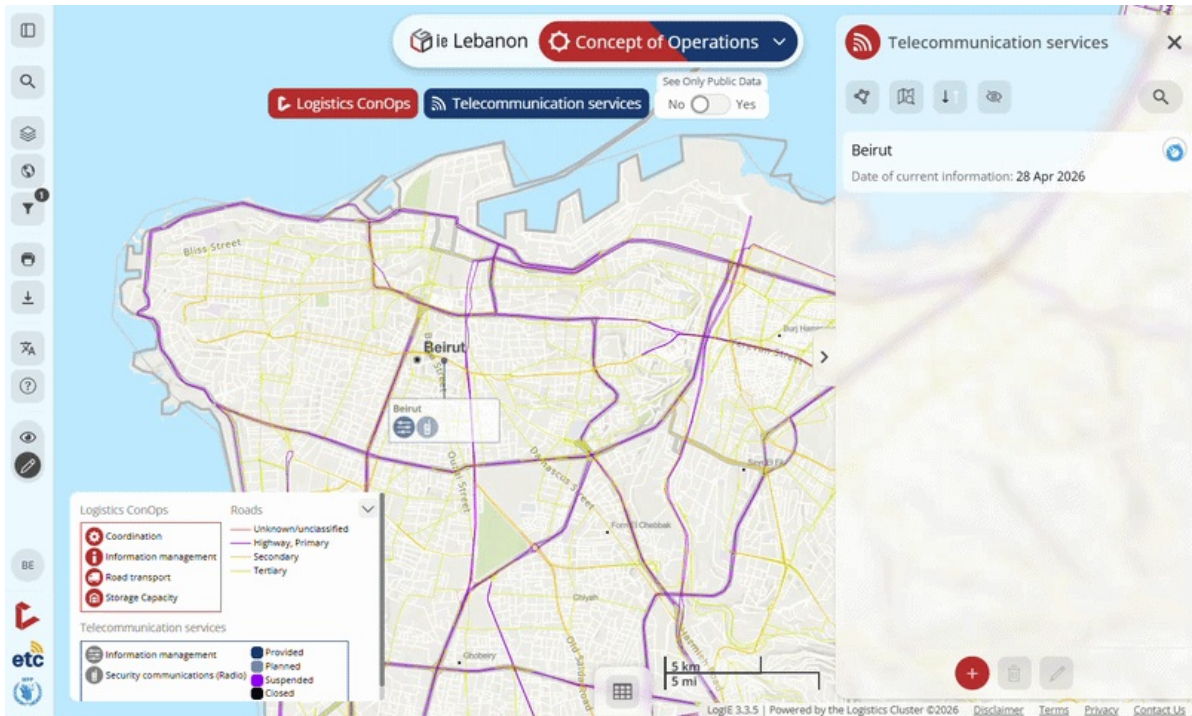
- Click the plus (+) button at the bottom of the screen to create a new entry.
- Locate the place using one of these methods:
 - Search for the place in the Editor Panel's search box.
 - Enter the coordinates manually.
 - Click directly on the map to select the location.
- Add the necessary details:
 - In the caption field, enter the text that will appear at the top of the box. Typically, this shows the name of the location (e.g., city) where the services are provided.
 - Use the toggle switches to select the services provided.
 - For each service, use the dropdown to select its status: Provided, Planned, Suspended, or Closed.
 - Fill in any additional relevant information.

3) Modifying the services displayed in a box on the map. To update services for an existing box that appears on the map, you have two options:



- Click on "Telecommunications services" under Provide situational updates in the Editor Manager.
- You have two options to locate the box you want to modify:
 - Find the box in the list and click the pencil icon next to it.
 - Click directly on the box on the map, then select the pencil icon in the popup (located at the top right).
- Now you can add, remove, or update the services by modifying the form that appears. After making your changes, click on "Save and Confirm Status."

4) Deleting a box on the map (removing all services from a location)



- You have two options to locate the box you want to delete:
 - Find the box in the list and click the pencil icon next to it.
 - Click directly on the box on the map, then select the pencil icon in the popup (located at the top right).
- Click the bin (delete) icon in the Editor Panel.
- Confirm the deletion.

TIP: As an editor, the position where you place a box on the map is exactly how users will see it. You can drag boxes to move them and arrange the layout as you want it to appear.