

# Update and edit the "CONOPS map"

## At a glance

Here, you'll learn how to update and edit the CONOPS map, including:

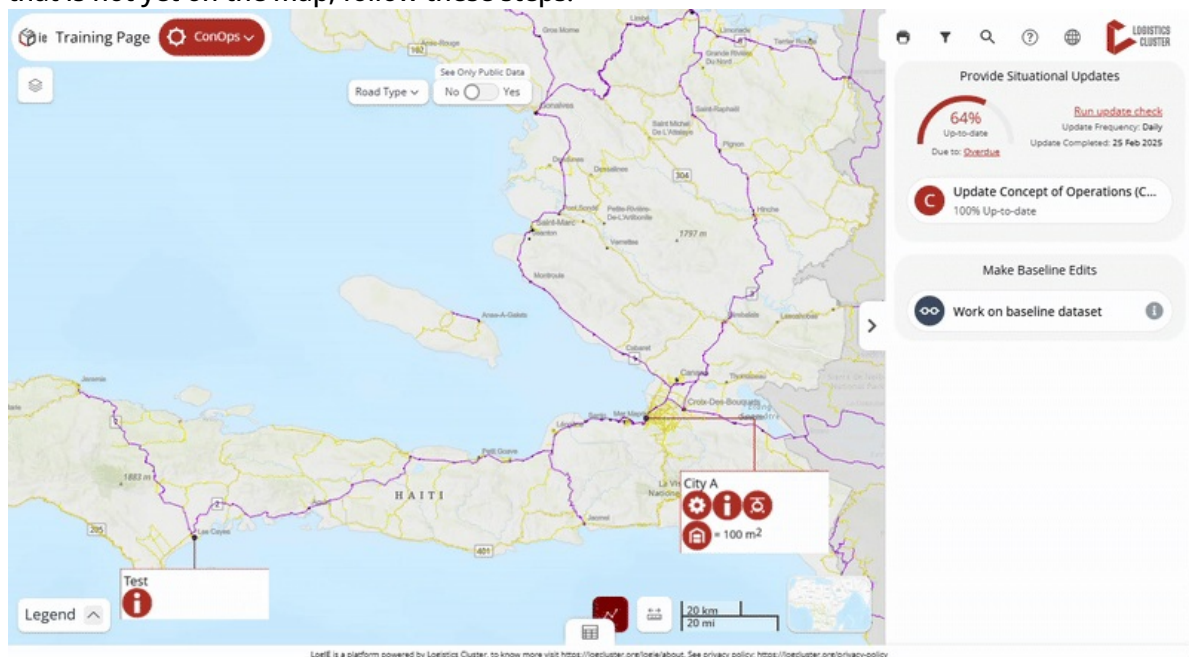
- Adding a new box to the map with details like services provided
- Changing the location of an existing box or updating the services it shows
- Removing a box from the map

## Step-by-step example

*" Scenario: You need to update the CONOPS map in LogIE by adding new services and removing others.*

**1)** To begin, switch to the **CONOPS module** if you are currently in a different module in LogIE. You will then see that the editor panel displays the Concept of Operations (CONOPS) layer.

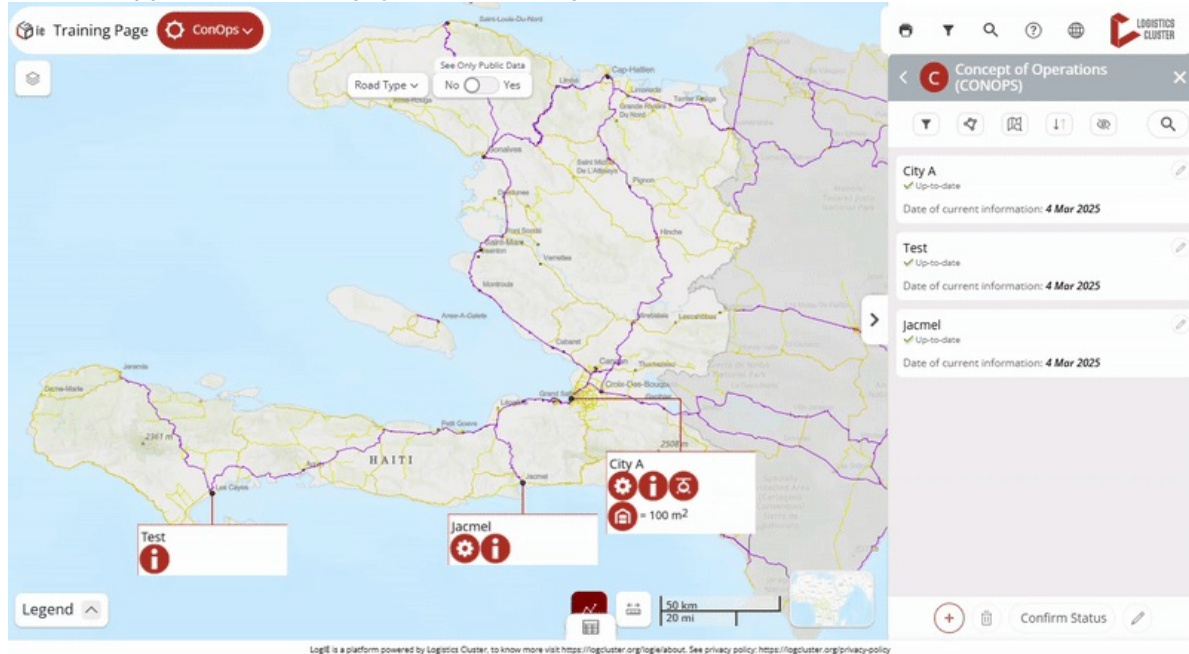
**2)** Adding a **new box on the map** for a specific location. If you need to add services to a place that is not yet on the map, follow these steps:



- Click on "Update CONOPS (Concept of Operations)" in the editor panel.
- Click the plus (+) button at the bottom of the screen to create a new entry.
- Locate the place using one of these methods:
  - Search for the place in the Editor Panel's search box.
  - Enter the coordinates manually.
  - Click directly on the map to select the location.
- Add the necessary details:
  - In the caption field, enter the text that will appear at the top of the box. Typically, this shows the name of the location (e.g., city) where the services are provided.
  - Use the toggle switches to select the services provided.
  - Fill in any additional relevant information. If you indicate Storage (climate-controlled or not), you can also specify the storage capacity in square meters, which will be

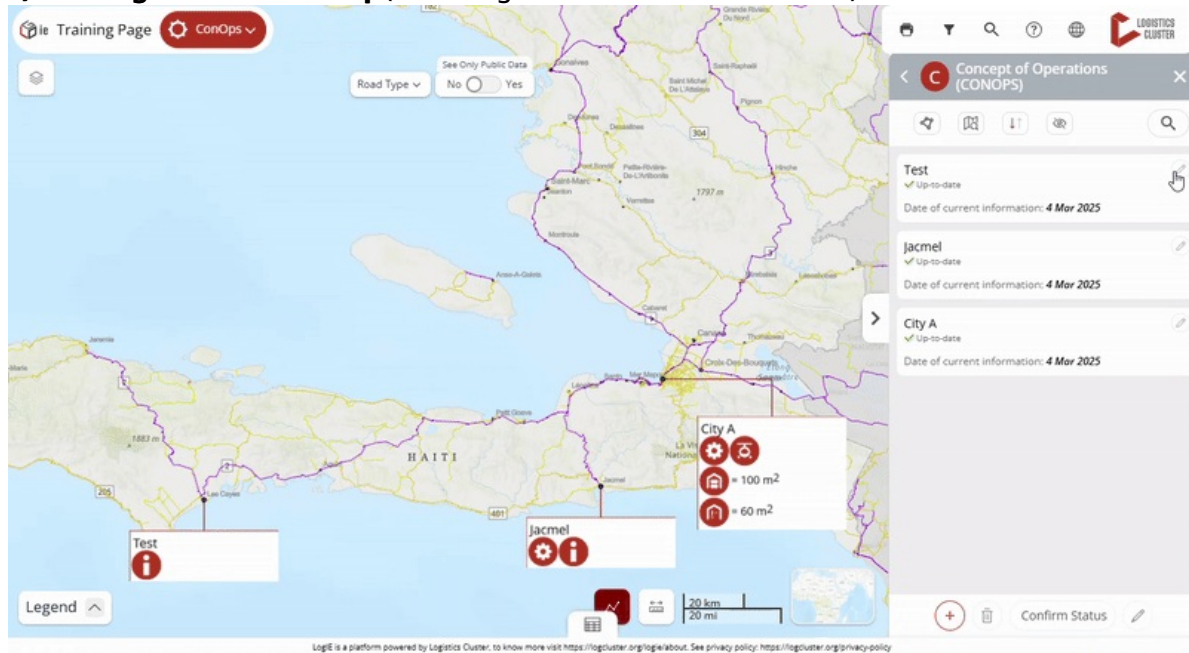
displayed on the map.

**3) Modifying the services displayed in a box on the map.** To update services for an existing box that appears on the map, you have two options:



- Click on "Update CONOPS (Concept of Operations)" in the editor panel.
- You have two options to locate the box you want to modify:
  - Find the box in the list and click the pencil icon next to it.
  - Click directly on the box on the map, then select the pencil icon in the popup (located at the top right).
- Now you can add, remove, or update the services by modifying the form that appears. After making your changes, click on "Save and Confirm Status."

**4) Deleting a box on the map** (removing all services from a location)



- You have two options to locate the box you want to delete:

- Find the box in the list and click the pencil icon next to it.
  - Click directly on the box on the map, then select the pencil icon in the popup (located at the top right).
- Click the bin (delete) icon in the Editor Panel.
- Confirm the deletion.